

この図面等は、土地区画整理事業に関する参考資料として提供しています。
 ○図面等は換地処分時のものであり、現在の状況とは異なる場合があります。
 ○図面等によって、境界等が確定されるものではありません。

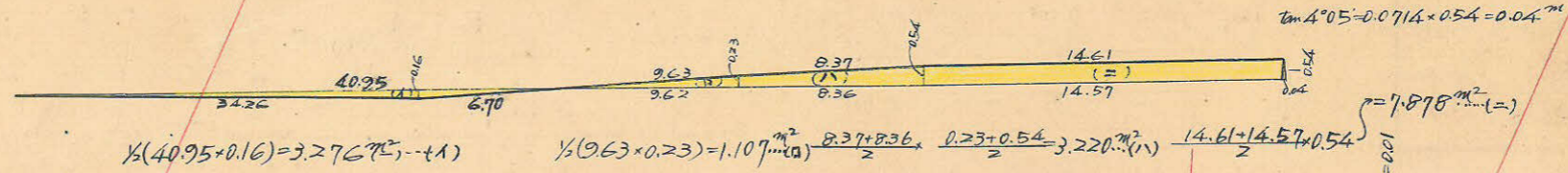
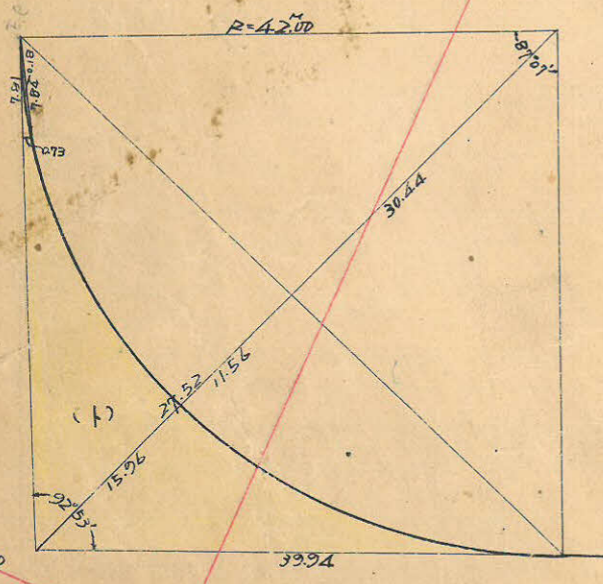
50B

トナー精度 1/7,000

4=200

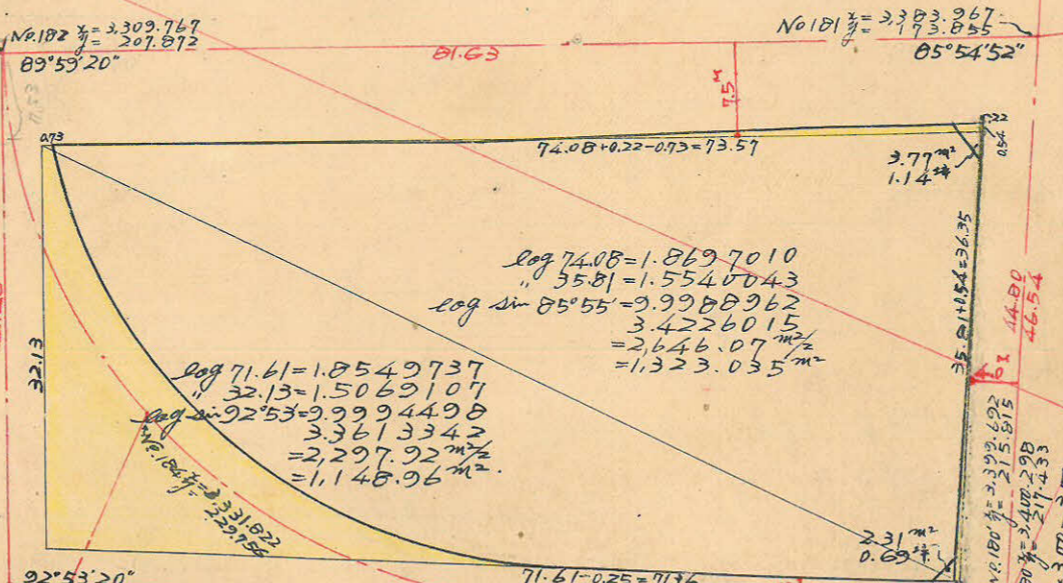
IA = 87°07'
 R = 42.60
 T.L = 39.94
 S.L = 15.96
 C.L = 63.86

$\frac{\pi R^2}{360} = \frac{3.1416 \times 42^2 \times 87.1166}{360} = 1,341.059 \text{ m}^2$
 $\frac{1}{2}(12.00 \times 12.00 \times 0.99873) = 880.879 \text{ m}^2$
 $1,341.059 \text{ m}^2 - 880.879 \text{ m}^2 = 460.180 \text{ m}^2$
 $\frac{1}{2}(39.94 \times 39.94 \times 0.99873) = 796.588 \text{ m}^2$
 $796.588 \text{ m}^2 - 460.180 \text{ m}^2 = 336.408 \text{ m}^2$
 $\frac{1}{2}(7.81 \times 0.73) = 2.858 \text{ m}^2$
 $\frac{1}{3}(7.81 \times 0.15) = 0.940 \text{ m}^2$
 $2.858 - 0.940 \text{ m}^2 = 1.910 \text{ m}^2$
 $336.408 \text{ m}^2 - 1.910 \text{ m}^2 = 334.498 \text{ m}^2 \dots (1)$



$1.107 + 3.220 + 7.878 - 3.276 = 8.929 \text{ m}^2$
 $8.929 + 0.538 = 9.467 \text{ m}^2$

$\Delta c 4^\circ 05' = 1.0025 \times 4.00 = 4.01$
 $\tan 4^\circ 05' = 0.0714 \times 7.50 = 0.5355$



$\log 74.08 = 1.8697010$
 $\log 35.81 = 1.5540043$
 $\log \sin 85^\circ 55' = 9.9988962$
 3.4226015
 $= 2,646.07 \text{ m}^2$
 $= 1,323.035 \text{ m}^2$
 $\log 71.61 = 1.8549737$
 $\log 32.13 = 1.5069107$
 $\log \sin 92^\circ 53' = 9.9994498$
 3.3613342
 $= 2,297.92 \text{ m}^2$
 $= 1,148.96 \text{ m}^2$

$\Delta c 2^\circ 53' = 1.0013 \times 3.00 = 3.00$
 $\tan 2^\circ 53' = 0.0504 \times 3.00 = 0.1512$
 2.85

$\Delta c 1^\circ 12' = 1.0002 \times 4.00 = 4.00$
 $\tan 1^\circ 12' = 0.0209 \times 3.00 = 0.0627$
 3.94

$\Delta c 1^\circ 12' = 1.0002 \times 4.00 = 4.00$
 $\tan 1^\circ 12' = 0.0209 \times 4.00 = 0.0836$
 2.92

$\tan 1^\circ 12' = 0.0209 \times 2.25 = 0.0470$

$\frac{1}{2}(19.05 \times 0.25) = 2.381 \text{ m}^2$

$\frac{1}{2}(16.76 \times 0.22) = 1.843 \text{ m}^2$

$2.381 \text{ m}^2 + 1.843 \text{ m}^2 = 0.538 \text{ m}^2$

合計面積 $1,323.035 + 1,148.960 - 334.498 + 8.391 + 2,145.89 = 2,145.89 \text{ m}^2$
 除去 $3.77 + 2.31 = 6.08 \text{ m}^2$
 $2,145.89 - 6.08 = 2,139.81 \text{ m}^2$