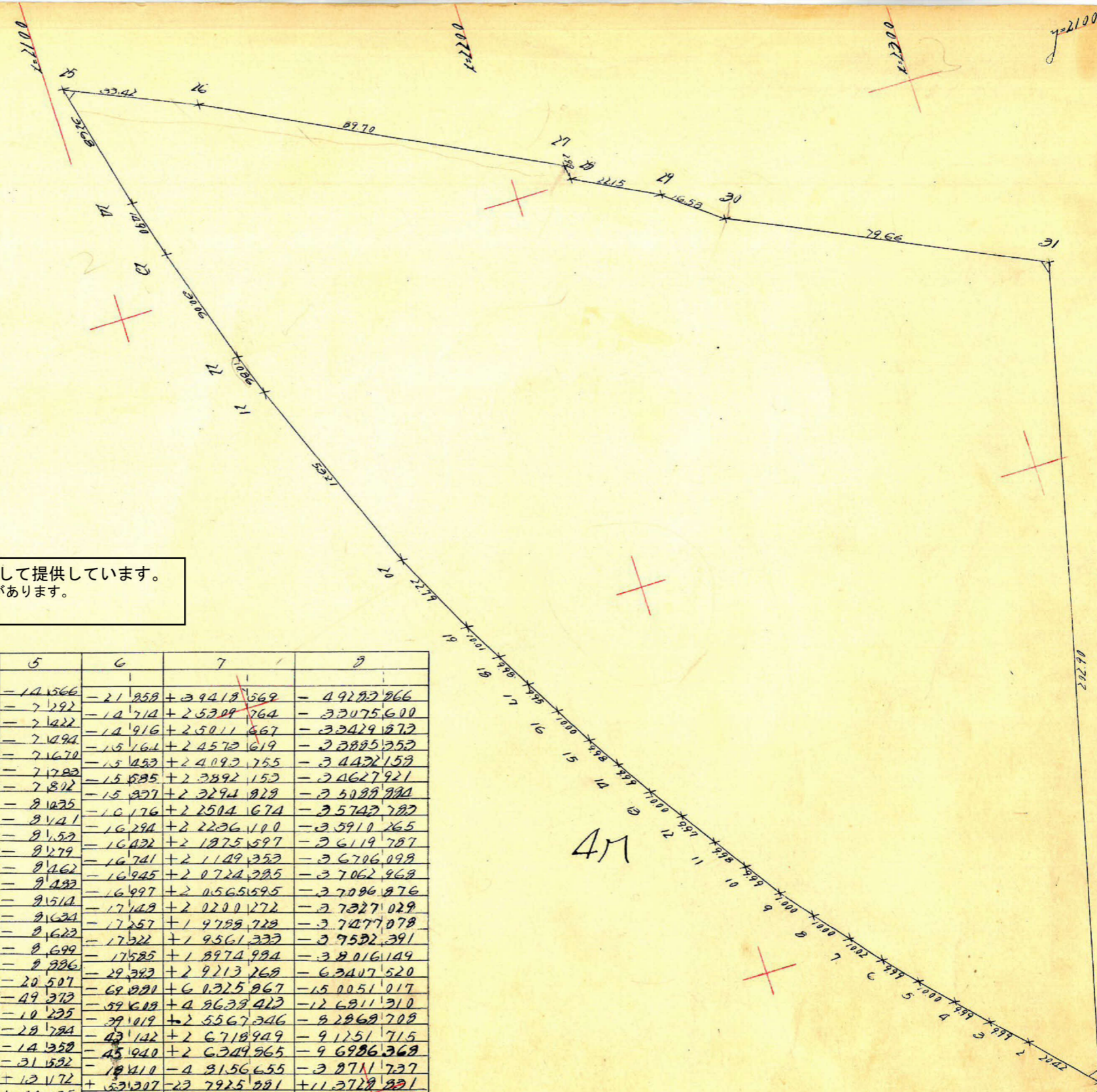


この図面等は、土地区画整理事業に関する参考資料として提供しています。
 ○図面等は換地処分時のものであり、現在の状況とは異なる場合があります。
 ○図面等によって、境界等が確定されるものではありません。

測点	1	2	3	4	5	6	7	8
1	2269.039	-14.310		1950.166	-14.566			
2	2254.729	-6.829	-21.169	1964.732	-7.192	-21.858	+394.18	569
3	2247.190	-6.691	-13.520	1972.024	-2.122	-12.714	+2.5309	764
4	2241.209	-6.107	-13.308	1979.446	-2.109	-12.916	+2.5011	667
5	2234.592	-6.107	-13.023	1986.940	-2.109	-15.164	+2.4573	619
6	2227.196	-6.106	-12.717	1994.610	-2.167	-15.432	+2.4092	755
7	2221.975	-6.131	-12.559	1902.393	-2.178	-15.685	+2.3892	153
8	2215.627	-6.209	-12.185	1910.195	-2.802	-15.327	+2.3294	828
9	2209.169	-5.947	-11.732	1919.230	-8.123	-10.176	+2.2504	674
10	2203.185	-5.785	-11.503	1926.371	-8.141	-16.294	+2.2236	100
11	2198.137	-5.125	-11.303	1934.524	-8.152	-16.432	+2.1875	597
12	2192.537	-5.550	-10.896	1942.802	-8.179	-16.741	+2.1149	353
13	2187.251	-5.326	-10.621	1951.265	-8.162	-16.945	+2.0724	385
14	2181.966	-5.225	-10.494	1959.748	-8.183	-16.997	+2.0565	595
15	2176.757	-5.126	-10.262	1968.262	-8.154	-17.148	+2.0200	272
16	2171.703	-5.054	-10.010	1976.896	-8.163	-17.257	+1.9789	728
17	2166.747	-4.956	-9.852	1985.519	-8.162	-17.322	+1.9361	333
18	2161.951	-4.896	-9.515	1994.218	-8.169	-17.585	+1.8974	984
19	2157.227	-4.619	-10.594	2003.104	-8.386	-29.382	+2.9213	268
20	2147.267	-9.965	-29.911	2023.611	-20.507	-69.881	+6.0325	867
21	2127.421	-19.846	-22.463	2072.984	-49.372	-59.619	+4.8633	422
22	2123.904	-21.617	-12.273	2083.219	-10.225	-39.019	+2.5567	346
23	2115.148	-21.656	-12.651	2112.002	-12.784	-43.142	+2.6718	949
24	2111.153	-3.985	-12.392	2126.361	-14.532	-45.940	+2.6349	865
25	2102.126	-5.397	+22.136	2157.943	-31.532	-19.410	-4.3156	655
26	2133.469	+20.712	+11.093	2140.771	+12.172	+33.307	-23.7925	881
27	2213.689	+8.022	+9.597	2104.636	+40.135	+43.101	-16.9608	301
28	2214.056	+1.267	+19.965	2101.670	+2.966	+13.210	-4.1935	824
29	2223.604	+19.599	+32.777	2091.326	+10.241	+20.396	-6.8547	392
30	2246.823	+13.139	+35.045	2081.274	+10.052	+40.433	-17.7001	947
31	2219.689	+7.856	+22.706	2046.893	+34.331	+23.108	-4.5453	305
1	2269.039	-14.310	-62.961	1950.166	-14.566	-182.161	-11.3336	617

$60304.594 \div 2 = 30152.301$

$30152.30 - 69.83 = 30082.47$ (x)
 10.33 (x)
 $0.3025 = 9099.94$
 $3.27 = 3.26$
 9096.69



GM

AM

1900

2005.49